



Test Report

MULTIFUNCTIONAL PRODUCTS
Gestetner 1302f w/Type 1013 Print Controller
13 PPM/SEGMENT 1 Copier/Fax/Printer
(TESTED AS THE RICOH AFICIO 1013F)*



Test period duration:
Three months, including
a 7,500-impression durability test



Distributor:

Savin Corporation
Stamford, CT

Manufacturer:

Ricoh Corporation
West Caldwell, NJ
Made in China

*Note: The Gestetner 1302f is a version of the Ricoh Aficio 1013F with cosmetic differences only. Gestetner is a brand name of Savin Corporation, which is a wholly owned subsidiary of Ricoh Corporation.

Serial number: H9228902655

Suggested retail price: \$2,595; \$5,127 as tested with the optional 500-sheet paper tray unit (\$340), cabinet (\$207), 32-MB copier memory (\$185), Type 1013 Print Controller (\$450), PostScript 2 kit (\$360), network interface board (\$485), 128-MB printer memory (\$440) and handset (\$65).

Type: Desktop, CCD digital flatbed scanner, laser imaging, bond sheet paper, dry toner, dual-component developing, heat and pressure fusing multifunctional device with standard copy and fax and optional network print capabilities.

GENERAL APPRAISAL

Offering outstanding productivity, excellent economy and feedback to workstation users of a quality rarely seen in products in this range, the Gestetner 1302f provided a very good overall performance in BLI's tests. An attractively priced 13-ppm Segment 1 multifunctional product, as tested with the optional Type 1013 print controller, the Gestetner 1302f proved to be reliable. The test unit, which offers standard copy and fax functionality (the Gestetner 1302 is a configuration without standard fax functionality), as well as optional network print functionality, demonstrated flawless reliability, completing BLI's three-month, 7,500-impression test without any service calls or misfeeds.

continued

Copyright 2002. **WARNING:** This material is copyrighted by Buyers Laboratory Inc. and is the sole property of Buyers Laboratory. Duplication of this proprietary report or excerpts from this report, in any manner, whether printed or electronic (including, but not limited to, copying, faxing, scanning or use on a fax-back system), is illegal and strictly forbidden without written permission from Buyers Laboratory. Violators will be prosecuted to the fullest extent of the law. To purchase reprints of any BLI reports or articles, contact BLI at (201) 488-0404. Buyers Laboratory Inc., 20 Railroad Avenue, Hackensack, NJ 07601. Or visit our Web site at www.buyerslab.com.

General Appraisal *continued*

Particularly impressive is the productivity of this very compact simplex-only model, with efficiency rates that are well above average. Indeed, overall efficiency rates are the highest in both copy and print modes of Segment 1 units tested to date. First-print-out time is also among the fastest for units in this group tested to date.

Supporting up to legal-size output, the Gestetner 1302f also offers good ease of use, both from the control panel, which features an easy-to-navigate menu system, and from the desktop, via the well-laid-out print drivers that feature an auto-install utility. Setup on the network was also very easy, thanks to the SmartNetMonitor utility, and noteworthy is that the PCL drivers automatically detect and display the device's configuration, eliminating the need for an administrator to specify this information. Also contributing to overall good ease of use is excellent feedback to PC workstations that includes audible and visual alerts, pop-up device and print job status messaging, and always-on-top status information. Such extensive feedback is rarely seen on devices on this range. The unit also offers easy procedures for loading paper, removing misfeeds and replacing toner. The Gestetner 1302f also received BLI's highest image quality rating for all types of output in copy mode (text, line art, halftones and solids) and for text and line art in print mode.

Connectivity

Configured as tested with the optional Type 1013 print controller and optional 10/100BaseT network interface, the Gestetner 1302f provided good performance overall as a 600-dpi network printer, as noted above,

with impressive efficiency and good ease of use. PCL 5e and PCL 6 drivers for Windows 95/98, 2000, Me, XP and NT 4.0 are standard (Mac OS is also supported), while BLI also tested the unit with the PostScript option. The drivers were easy to use and were very similar in layout. The standard 16-MB print memory can be expanded to 144 MB. The unit begins printing while a document is still being RIPped and its first-print-out time is faster than that of many tested Segment 1 units.

Performance as a fax was also good overall, with a tested scan-to-memory speed of 4.18 seconds, good procedures for transmitting from memory after a failed communication and easy programming procedures. The unit's standard fax feature set includes a 33.6-Kbps modem with MMR compression, 12-hour battery back-up, broadcasting to five groups, 16 one-touch keys and 50 speed-dial codes.

Priced lower than the average for units in the 8- to 18-ppm speed range tested to date, the unit offers a basic feature set that is typical for the most part of units in this range, including the ability to produce up to 99 copies in a single run, an 8-MB standard memory (1 MB of which is allotted to the fax function; expandable to 5 MB), expandable to 40 MB, a standard single 250-sheet paper drawer that accommodates up to letter-size paper, plus a bypass tray with a higher-than-average capacity of 100 sheets (paper capacity is expandable to 850 sheets) that accommodates up to legal-size stock, a standard 30-sheet automatic document feeder, and, when configured as tested with the 32-MB copier memory option, electronic sorting for collated output. Noteworthy is that the unit's tested toner yield (8,997 impressions) and

continued

General Appraisal *continued*

impressions-per-gram toner yield, are higher than average for units in its speed range. Moreover, usage of all the device's functions (copy, fax and print) can be tracked for up to 10 users.

Shortcomings

A few shortcomings of the Gestetner 1302f were revealed in the tests: 1) The unit's output in print mode was rated "Fair" for halftones, which had a grainy appearance, and for solids, which were not as dark and consistent as that produced by many other units in this range. 2) Multitasking is limited in that a walk-up user cannot initiate a fax job while the unit is copying. Moreover, although typical of Segment 1 units tested, a copy job cannot be programmed while another copy job is in progress. A copy job can be programmed and initiated, however, when a print job is in progress. 3) While it won't be an issue if the unit is configured with additional optional memory, it was observed that an additional phone call is required to transmit a document from memory when the size of a file exceeds memory capacity. See "Transmitting from memory when the size of the file exceeds memory capacity." 4) Ease of adjusting paper drawers was rated "Fair." 5) The first-copy time of this unit, which feeds paper in the longer letter R direction, at 9.1 seconds from the document feeder and 10.5 seconds from the platen, is not as fast as that of most Segment 1 multifunctional units tested to date.

Pricing Analysis And Summary

BLI's suggested retail pricing analysis reveals that the Gestetner 1302f, configured as tested, is priced below the average for comparably

equipped multifunctional units in its speed range. Moreover, cost per page for supplies (which consists only of the toner cartridge, as the drum unit is service-replaceable and, therefore, covered by a service contract) is the lowest for Segment 1 units tested to date. This aggressive pricing, combined with the unit's very good performance in the tests, make the Gestetner 1302f an excellent value that BLI recommends for monthly volumes of up to 3,000 impressions.

Copy Quality:

Text: Good
Line art: Good
Halftones: Good
Solids: Good

Print Quality:

Text: Good
Line art: Good
Halftones: Fair
Solids: Fair

Ease of use: Good

Ease of maintenance: Good

Estimated waste: Low

Estimated downtime: Low

Misfeeds: 0

Misfeed rate: Not applicable

Total service calls
(including PMs): 0

MIBF: Not applicable

MIBS: Not applicable

Toner yield:
(at 6% coverage) 8,997 impressions

Manufacturer's recommended monthly volume: Up to 5,000 impressions.

BLI's recommended monthly volume for optimum performance: Up to 3,000 impressions.

TEST RESULTS AND OBSERVATIONS

Test equipment: BLI's dedicated test network, consisting of Windows NT 4.0 servers, Windows 98 and 2000 workstations, 10BaseT/100BaseTX network switches and CAT5 cabling.

Reliability

PMs/Malfunctions	Service Required	Meter Count (Impressions)	Impressions Between Service
Meter count (beginning of test)		0	
End of test period		7,500	
Total Misfeeds/Misfeed Rate	0 / Not applicable		
Service Calls	0		
PMs	0		
Total Service Calls (including PMs)	0		
M.I.B.F. ¹	Not applicable		
M.I.B.S. ²	Not applicable		
¹ <i>Mean Impressions Between Failures (To obtain this number, BLI divides the total number of impressions produced during the test period by the number of service calls required. In actuality, it reflects the average number of impressions produced without a malfunction.)</i>			
² <i>Mean Impressions Between Service (To obtain this number, BLI divides the total number of impressions produced during the test period by the number of service calls, including preventive maintenance calls, required. In actuality, it reflects the average number of impressions produced without a service call.)</i>			

Additional observations: (1) It should be noted that when originals are being scanned for a copy or fax function, if the user attempts to insert pages for a second job before the document feeder has completely finished cycling for the first set of originals, a misfeed will result and the job will automatically be halted. (2) When using Adobe Photoshop, the user must enter the print quantity from the application's print dialog box — not from the printer driver — or only one set will be produced.

Maintenance

PMs are performed every 45,000 impressions, at which time the drum/developer unit and the upper and lower fusing rollers are replaced. (Unless otherwise noted, all of the above consumables that would normally be replaced during the course of this test met or exceeded the life expectancy specified by the vendor.)

User-Replaceable Consumables

Toner bottle: Estimated retail price, \$28.17. Manufacturer's rated yield, 7,000 pages at 6% page coverage.

Ease of replacing toner: Good. The process was clean and easy.

Toner replacement possible during print/copy run: No.

TESTED TONER YIELD (BASED ON 6% PAGE COVERAGE)

Toner Yield (Impressions)
8,997

Impressions Per Gram
38.8

Toner cartridge net weight: 231.6 grams

Copyright 2002. **WARNING:** This material is copyrighted by Buyers Laboratory Inc. and is the sole property of Buyers Laboratory. Duplication of this proprietary report or excerpts from this report, in any manner, whether printed or electronic (including, but not limited to, copying, faxing, scanning or use on a fax-back system), is illegal and strictly forbidden without written permission from Buyers Laboratory. Violators will be prosecuted to the fullest extent of the law. To purchase reprints of any BLI reports or articles, contact BLI at (201) 488-0404. Buyers Laboratory Inc., 20 Railroad Avenue, Hackensack, NJ 07601. Or visit our Web site at www.buyerslab.com.

TEST RESULTS AND OBSERVATIONS *continued*

Guarantee/Warranty: The Gestetner 1302f is backed by a 90-day warranty and by Savin's three-year Customer Satisfaction Policy.

Ease of Operation

Documentation: Good. A total of five printed manuals were included with the tested configuration, which included the optional print controller and standard copy and fax functionality. In addition, on-line documentation was included.

Ease of use: Good. The 2-11/16" x 11/16", two-line 21-character text LCD display, which is not adjustable for brightness, was easy to use, with an easy-to-navigate menu system and a dedicated key for each function (copy, fax and print). Ease of use as a printer was also very good, both from the drivers and for setup. The "User Tools" key enables printing of a configuration page, a menu list and PostScript or PCL font lists, editing of network parameters, changing default settings for the device, and viewing or printing total counters for each function.

Control panel status messages/job access: LEDs indicate when the device is printing and either transmitting or receiving a fax. There is no job list displayed, but only one additional print job resides on the device while another print job is running. Other than the LED, no status information regarding a print job currently in progress is provided. Regardless of which function menu is currently displayed (copy, print, fax), however, the status of fax transmissions is always available. When sort mode is enabled (requires 16 MB of additional memory), copy job status includes the number of sets

completed. When non-sort mode is selected, the total number of pages output, not the number of sets, is displayed. For example, when five sets of two originals are copied, the display counts up to 10.

Feedback to PC workstations: Good. Users can receive pop-up messages and can check status with the status window of the SmartNetMonitor utility, which can be set to be displayed always on top (i.e., never hidden behind other windows).

Pop-up messages: Yes, error and print job completion notification. The user can also program an audible sound or flashing icon.

Icon alerts: Yes, in addition to audible alerts, the SmartNetMonitor icon on the toolbar changes color to indicate an error condition, although the icon is small. Error conditions are depicted in red on the status window of the SmartNetMonitor utility.

Audible alerts: Yes.

Device status: Yes, via pop-up messages and the SmartNetMonitor utility. Messages include cover open, paper misfeed, warming up, printing and ready, to name a few.

Print job status: Yes, via a job completion pop-up message and via the "My Job List" utility, which is a component of SmartNetMonitor.

Paper supply gauge from driver/utility/Web: No/Yes/No.

Paper size status from driver/utility/Web: No/Yes/No.

Always-on-top status information: Yes.



Gestetner 1302f Control Panel

Copyright 2002. **WARNING:** This material is copyrighted by Buyers Laboratory Inc. and is the sole property of Buyers Laboratory. Duplication of this proprietary report or excerpts from this report, in any manner, whether printed or electronic (including, but not limited to, copying, faxing, scanning or use on a fax-back system), is illegal and strictly forbidden without written permission from Buyers Laboratory. Violators will be prosecuted to the fullest extent of the law. To purchase reprints of any BLI reports or articles, contact BLI at (201) 488-0404. Buyers Laboratory Inc., 20 Railroad Avenue, Hackensack, NJ 07601. Or visit our Web site at www.buyerslab.com.

TEST RESULTS AND OBSERVATIONS *continued*

Ease of removing misfeeds: Good. Non-clamshell design; three misfeed locations.

Ease of loading paper: Good.

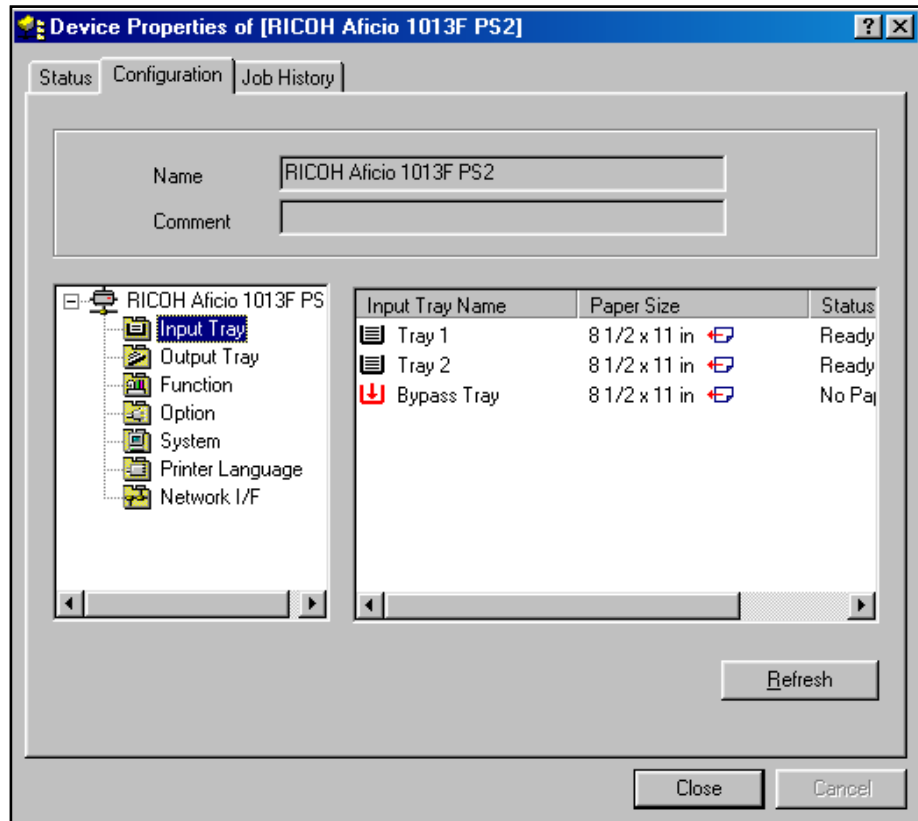
Ease of adjusting paper drawers:

Fair. The standard and optional paper drawers require users to press two spring-loaded side-to-side guide release levers to move the side guide to the desired position and manually remove and reinsert the length guide into the desired location. The optional drawer is adjusted by sliding the side guide located at the front of the drawer after pressing a spring-loaded release lever and then sliding the length guide to the new position. Once the paper drawers are adjusted, the new paper size must be set at the control panel. See "Operator error."

Operator error: If the user neglects to change the paper size for the standard or optional drawers at the control panel after changing the paper size in the drawer, users may copy/print onto the wrong size paper and misfeeds may occur.

Throughput Capabilities/Materials

Paper output: The Gestetner 1302f has a 250-sheet standard internal tray that is used for all output (copies, received faxes and print jobs). All output is face down in correct page order for all functions.



SmartNetMonitor Paper Status and Configuration Screen

Ability to process self-adhesive address labels: Avery #5351 labels performed satisfactorily in the tests. (The manufacturer recommends that users feed labels through the bypass tray only.)

Ability to process transparencies: 3M-PP2500 clear transparencies performed satisfactorily in the tests. (The manufacturer recommends that users feed transparencies through the bypass tray only.)

TEST RESULTS AND OBSERVATIONS *continued*

GESTETNER 1302f MULTITASKING EVALUATION				
Secondary Function \ Primary Function	SEND FAX	RECEIVE FAX	PRINT	COPY
SEND FAX	Yes ¹	No ³	Yes ²	Yes ²
RECEIVE FAX	Yes ¹	No ³	Yes ¹	Yes ⁷
PRINT	Yes ²	Yes ²	Yes ¹	Yes ⁴
COPY	No ⁵	Yes ²	Yes ¹	No ⁶

¹ Secondary function is completed *after* primary function. (5)
² Primary and secondary functions take place simultaneously. (5)
³ The phone line is busy or in use. (2)
⁴ The primary function is automatically interrupted, allowing output for the secondary function, after which the device automatically resumes the primary function, resulting in output becoming intermingled. (1)
⁵ The device beeps in error. (1)
⁶ The device does not support copy reserve or program ahead. (1)
⁷ If the copy job is started before the first page of a fax reception is output, the copy job will be completed before any of the fax pages are output. If the fax reception has already begun printing when a walk-up user initiates a copy job, the fax reception will pause, allowing the copy job to run. Once the copy job is complete, the fax will continue and output will be intermingled. (1)

NOTE: (X) indicates number of occurrences. A "Yes" indicates that the user can initiate the secondary function while the primary function is taking place and that no further user intervention will be required for the secondary function to take place.

Multitasking (More Than Two Functions/Jobs)

Note: In addition to a single-user multitasking test, which evaluates a unit's ability to initiate or perform one function while another function is already in progress (see chart above), BLI also tests a multifunctional product's ability to handle multiple jobs that would be likely to stack up in a multi-user networked environment. Depending on the number of different functions, three to six different job matrixes are run on each multifunctional

device. The job streams within each matrix are designed to test not only for concurrent operation of various functions, but also to uncover peculiarities pertaining to multitasking as it relates to various software programs (Adobe Acrobat, Adobe PageMaker, Microsoft Word 2000, Microsoft Excel and PowerPoint), paper sizes, copy/print job sizes and copy/print modes (e.g., simplex, duplex, finishing).

Mode priority: The default mode for the device (i.e., when reset or powered on) can be set, but there is no priority mode that can be established to give one function priority over another. BLI technicians observed, however, that copy jobs take priority. For example, the fax menu is not available when copying, and copy jobs interrupt other functions (i.e., receiving a fax or printing).

Interrupt: The control panel does not offer an "Interrupt" key for interrupting copy/print jobs to perform another copy job. However, when a print job is running and a copy job is programmed and initiated, the print job is automatically halted to run the copy job. Once the copy job is complete, the print job continues where it left off.

Memory allocation: The unit's memory is shared between copier and fax functions, while the print memory is separate. In the standard configuration with 8 MB of memory, 1 MB is allotted to faxing. When memory is upgraded to 40 MB, 5 MB is allotted to faxing.

Program ahead (reserve copy job) while copying: No. The device does not support program ahead or copy reserve while copying.

Program ahead (reserve copy job) while printing: Yes. One copy job can be scanned into memory while a print job is running. The device automatically stops printing to perform the copy job.

Device/feature contention issues. None.

Performance of Copier Functions Copy Quality

Density of solid black copied image (based on eight readings corresponding to eight different locations on the original):

Density of original: Range, 1.71 to 1.77 (on a scale of 0 to 2.5, with 2.5 being as dark as would be possible under most circumstances).

TEST RESULTS AND OBSERVATIONS *continued*

Density of copy: Range, 1.39 to 1.44 (on a scale of 0 to 2.5, with 2.5 being as dark as would be possible under most circumstances).

Density range for products tested to date: 0.96 to 1.63.

Copy quality:

Text: Good

Line art: Good

Halftones: Good

Solids: Good

Copying speed (8-1/2" x 11"R copies):

First-copy time from the platen:

Fastest time: 10.5 seconds (time was the same regardless of the combination of automatic modes selected).

First-copy time from the document feeder:

Fastest time: 9.1 seconds (time was the same regardless of the combination of automatic modes selected).

Number of copies per minute excluding first copy: 15

Number of copies per minute including first copy: 13

Copier Productivity

Warm-up: About 17.7 seconds from a cold start.

**GESTETNER 1302f
PRINT AND COPY QUALITY INDEX**

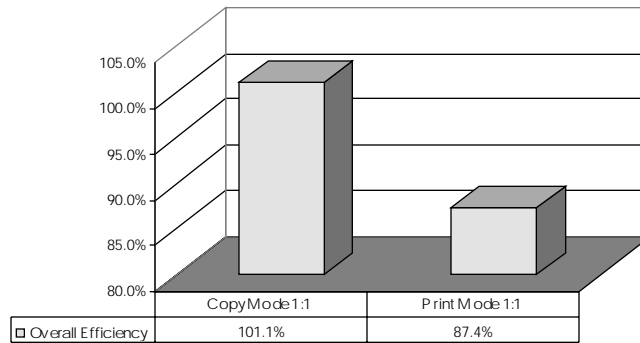
BUYERS LABORATORY INC.

Magnified view of black text.
Print mode (600 dpi, PS)
Printed on plain-paper stock.

BUYERS LABORATORY INC.

Magnified view of black text.
Copy mode (Auto/Text)
Printed on plain-paper stock.

COPY/PRINT EFFICIENCY



BLI obtains the overall efficiency for each copy/print mode by averaging the efficiency ratings (derived by dividing the tested speed of the device by the rated speed, and then multiplying by 100) for each run length (1, 5, 10 and 20 sets).

Note: Print speeds are tested with the PostScript emulation and with output to the standard internal tray.

TEST RESULTS AND OBSERVATIONS *continued*

Performance of Printer Functions

General: The Gestetner 1302f was configured with the optional Type 1013 print controller and 10/100BaseT Ethernet network interface.

Density of solid black printed image (based on four readings corresponding to four different locations on the original): Range, 1.23 to 1.29 (on a scale of 0 to 2.5, with 2.5 being as dark as would be possible under most circumstances).

Density range for laser/LED printers tested to date: 1.00 to 1.68.

Print Quality

Text: Good

Line art: Good

Halftones: Fair

Solids: Fair

Comments: Output produced by the Gestetner 1302f's PostScript 2 (emulation) print driver at its highest resolution (600 dpi) displayed distinct transitions between halftone levels, and text and line art was also produced well. Solids, however, were not as dark and consistent as many other devices in its class and halftones were grainy.

Compatibility (units are tested for compatibility on Windows 98 and Windows 2000 platforms with Microsoft Word 2000, Microsoft PowerPoint 2000, Adobe PageMaker 7.0, Adobe Photoshop 6.0 and Adobe Acrobat 5.0 using 25 application test files, which contain text, graphics, halftone images, tables, etc., enabling

BLI technicians to evaluate memory usage, file processing, font-rendering and grayscale capability): Good.

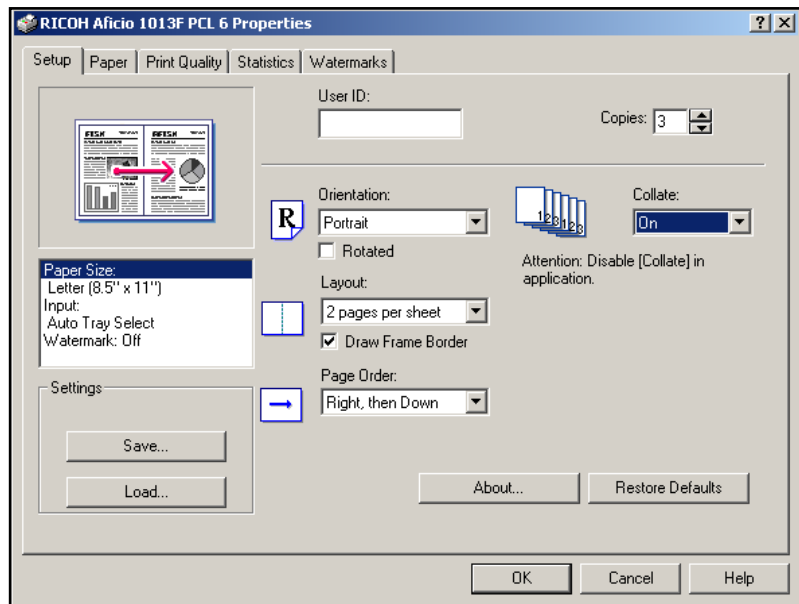
Print drivers: The Gestetner 1302f includes PCL 5e and PCL 6 and optional PostScript 2 print drivers for Windows 95/98, 2000, Me, XP and Windows NT 4.0 and Mac OS. Once the CD-ROM is installed, the user/administrator is presented with a menu to install the print drivers as well as the SmartNetMonitor utility, unlike with some other systems that require the user to manually install each print driver using the add printer wizard. The print drivers were easy to use, with the user able to select the desired paper source, for example, by clicking on the appropriate area of the graphic representation of the device. Moreover, all the features necessary for typical print jobs are accessible from the main screen of the drivers. In addition to the features listed in the chart on the next page, the drivers offer selections for toner-save mode, edge smoothing and the ability to add a department or user code for tracking. Noteworthy is that the configuration of the device is automatically detected and updated to the PCL drivers via the port that is created for network printing after installing the SmartNetMonitor utility, whereas most devices require the administrator to manually identify how the unit is configured. The drivers are very similar in layout and appearance. Although the manual offers information regarding use of envelopes, a selection for envelopes is not available from the driver, unlike with some other recent Gestetner devices tested. Any differences in functionality are highlighted in the chart.

TEST RESULTS AND OBSERVATIONS *continued*

GESTETNER 1302f PRINT DRIVER FEATURES

Features	Windows 98 PCL 5e	Windows 98 PCL 6	Windows 98 PostScript 2	Windows 2000 PCL 5e	Windows 2000 PCL 6	Windows 2000 PostScript 2
Auto Feature/ Device Detection	Yes	Yes	No	Yes	Yes	No
Booklet Printing	No	No	No	No	No	No
Collate Sets	Yes	Yes	Yes	Yes	Yes	Yes
Insertion (Max paper sources per job)	Two	Two	Two	Two	Two	Two
Mirror Image	No	No	Yes	No	No	Yes
Negative Image	No	No	Yes	No	No	Yes
N-up Printing	2 to 16	2 to 16	2 to 16	2 to 16	2 to 16	2 to 16
Overlay	No	No	No	No	No	No
Paper Gauge	No	No	No	No	No	No
Print and Hold	No	No	No	No	No	No
Proof Print	No	No	No	No	No	No
Quantity Selection	Up to 999	Up to 999	Up to 999	Up to 999	Up to 999	Up to 999
Reduction/Enlargement	Auto	Auto	Auto, 25 to 400%	Auto	Auto	Auto, 25 to 400%
Resolution Modes	600 x 600 dpi	600 x 600 dpi	600 x 600 dpi 300 x 300 dpi	600 x 600 dpi	600 x 600 dpi	600 x 600 dpi 300 x 300 dpi
Save Settings	Yes	Yes	No	Yes	Yes	No
Secure Printing	No	No	No	No	No	No
Watermarks/ Custom Watermarks	Yes/Yes	Yes/Yes	Yes/Yes	Yes/Yes	Yes/Yes	Yes/Yes

**Windows NT PCL 6
Print Driver Setup Menu**



TEST RESULTS AND OBSERVATIONS *continued*

Simultaneous RIP and print: Yes. Printing begins while the document is still being RIPped. Additional print jobs, however, are not RIPped while a document is currently being printed; instead, they remain at the user's workstation.

Print Productivity

TESTED RASTER TIMES/PRINT SPEEDS

Windows 2000	Word	PageMaker	Photoshop	Acrobat	Photoshop
File Type	Text	Graphic/Text	Graphic	Graphic/Text	Graphic
File Extension	DOC	PM6	TIF	PDF	JPG
Pre-Raster File Size	114 KB	116 KB	20 MB	171 KB	245 KB
Post-Raster File Size	121 KB	71.5 KB	51.5 MB	312 KB	17.1 MB
First-Page Time (seconds)	14.15	17.01	106.67	43.98	106.86
Speed Excluding First Page	14.04 ppm	14.04 ppm	2.79 ppm	14.03 ppm	7.81 ppm
Speed Including First Page	12.89 ppm	12.60 ppm	2.42 ppm	10.34 ppm	5.22 ppm

Manufacturer's rated speed: 13 ppm.

All files are printed in a quantity equal to twice the manufacturer's rated speed for the device. The print speeds were tested at 600 dpi using the Adobe PostScript driver.

First-page time indicates the time it took to RIP, image and deliver the first page of the test document set to the output tray.

Speed excluding first-page time indicates the time for printing the entire set of test originals, excluding first-page RIP and print times.

Speed including first-page time indicates the time for printing the entire set of test originals, including first-page RIP and print times.

Networking and connectivity: BLI technicians installed the Gestetner 1302f, configured with the optional Type 1013 print controller, on BLI's dedicated test network using a Windows NT 4.0 server. Network configuration, as well as installation of the print drivers, was simple. Prior to installation of the driver, the SmartNetMonitor utility is installed, which automatically locates devices on the network and creates a port. The PCL 5e, PCL 6 and PostScript drivers can be auto-installed. Once the drivers are installed, the administrator chooses the SmartNetMonitor port and selects the device from the available devices automatically listed. No networking problems were encountered with the Gestetner 1302f. Setup and use of the utility was very easy.

Administrative utilities: SmartNetMonitor, which comes in versions for administrators and end users, is used for performing administrative functions such as configuring network settings as well as for monitoring device and

print job status. An embedded Web utility can also be used for administration, though it provides only basic administration, such as the ability to configure network settings.

Auto run for administrative utility/print driver installation: Yes/Yes (except for PostScript driver).

Job log/accounting: Although an administrator cannot view or print tracking information from the utilities, the administrator can enable tracking of usage of all or specified functions (copy, fax and print) for up to 10 user or department accounts. If job tracking is enabled, users must enter the code at the control panel to use the tracked functions. To track printing, the code must be entered during a one-time setup of the print driver. There is no software or Web page utility for monitoring usage information remotely.

Password protection/access rights: Yes. The administrator

TEST RESULTS AND OBSERVATIONS *continued*

version of SmartNetMonitor and the embedded Web utility are passcode-protected so that only authorized users can make changes to the network setup.

Device status: Yes.

Document manipulation: No.

Automatic port creation: Yes. Once installed, SmartNetMonitor automatically locates devices on the network and creates a port.

Network configuration from control panel/utility/Web: Yes/Yes/Yes.

Manipulate order of print jobs in queue/print priority levels: No.

Reprint stored job without reRIPping: No.

Job status: Yes. Job completion notification is provided to end users, but administrators cannot check the progress of jobs.

Remote manipulation of device/print job settings: No/No.

Multiple-device monitoring: Yes.

File downloading: No.

Consumables monitoring: No.

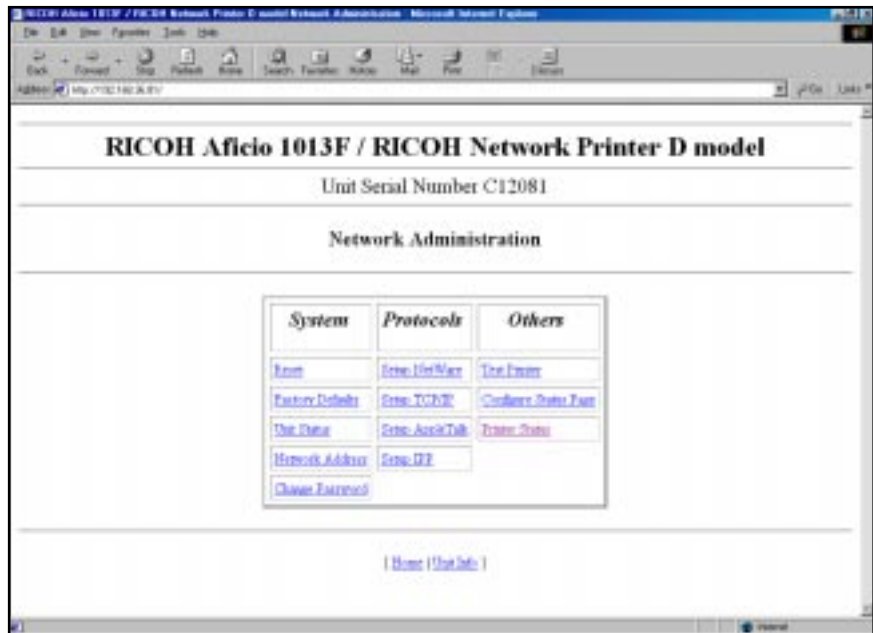
Preview or thumbnail image of file: No.

Web-based administration: The embedded Web utility, which can be password-protected so that only users with the authorized password can make changes to the device, offers limited administrative functions such as the ability to configure network settings.

Performance of Standalone Fax Functions

Fax scanning speed: The average scanning speed, obtained from scanning into memory three originals using standard resolution and normal contrast settings; timing begins when "Start" is pressed and continues until the last page exits onto the exit tray.

Fax scanning speed with 4% page coverage original: 4.17



Web Utility Menu

seconds per page; range for fax machines tested to date 1.59 to 14.94 seconds.

Fax scanning speed with 12% page coverage original: 4.18 seconds per page; range for fax machines tested to date, 1.59 to 26.11 seconds.

Memory capacity: In testing, the Gestetner 1302f's 40-MB memory (7 MB of which is standard for copy functions and 1 MB of which is standard for fax functions) held 70 pages of a 12% original in standard mode (while BLI uses a 12% original in determining memory capacity, note that the manufacturer uses the ITU-T Test Document #1 to determine memory capacity and claims a capacity of 80 pages when configured with the standard 1 MB of fax memory or 400 pages when fully configured with the maximum 40 MB of memory, 5 MB of which is dedicated to faxing).

Transmitting from memory after a failed communication: Good.

Transmitting from memory when the size of the file exceeds memory capacity: Poor. When the size of the file exceeds memory capacity, the line automatically disconnects and only those pages that were sent before the error are

TEST RESULTS AND OBSERVATIONS *continued*

transmitted. Additional pages that are stored in memory are erased. The Gestetner 1302f displays an error message, "MEMORY IS FULL. STORING STOPPED." In contrast, some other units tested scan additional pages into memory as memory becomes available. A status page is printed, but it does not indicate that an error

occurred. The remaining pages that were not transmitted remain in the document feeder. Note that if the unit is configured with additional optional memory, which increases fax memory to 5 MB, this will not likely be an issue.

PERFORMANCE OF TESTED SPECIAL FEATURES

Document Feeder

Satisfactory. The standard automatic document feeder (ADF) will automatically feed up to 30 sheets ranging in size from 5-1/2" x 8-1/2" to 8-1/2" x 14". It should be noted that the document feeder, like the paper sources, feed paper in the letter-R direction. Acceptable paper weights, 14 to 28 lbs.

Document feeding speeds (8-1/2" x 11"R originals; speeds were the same regardless of the automatic modes selected):

1:1 copy mode: 14.0 originals per minute.

Bypass

Satisfactory. The standard "non-intelligent" 100-sheet stack-feed bypass has double-gearred, adjustable side

guides that move in sync to accommodate sheets ranging in size from 5-1/2" x 8-1/2" to 8-1/2" x 14" and in weight from 16 to 42 lbs. The bypass is automatically selected when sheets are placed in the tray and the user can program the paper size of the sheets in the bypass by selecting a hard key that displays a menu to program the paper size on the touch-screen display. It should be noted that a lever must be raised and lowered when adding paper to the bypass.

Paper Tray Unit

Satisfactory. The optional paper tray unit holds 500 sheets in a user-adjustable drawer that accommodates sheets ranging in size from 8-1/2" x 11"R to 8-1/2" x 14" and in weight from 16 to 24 lbs.

COST ANALYSIS

Service pricing: Contact your local dealer for service contract pricing.

COST PER PAGE (PURCHASE)					
Monthly Volume	Depreciated Purchase Price ¹	Paper ²	Supplies and Consumables ³	Total Per Page	Life-Cycle Cost ^{4*}
500	17.090¢	0.723¢	0.313¢	18.126¢	\$5,437
1,000	8.545	0.723	0.313	9.581	\$5,748
2,000	4.273	0.696	0.313	5.282	\$6,338
3,000	2.848	0.696	0.313	3.857	\$6,942
4,000	2.136	0.661	0.313	3.110	\$7,464
5,000	1.709	0.661	0.313	2.683	\$8,049

¹ The suggested retail price of the unit as tested, \$5,127, was depreciated over a five-year period using a straight-line method.

² The cost of paper was based on an estimated price for 5,000-sheet cartons of 8-1/2" x 11" 20-lb. bond: 1-4 cartons, \$36.15 each; 5-9 cartons, \$34.80 each; 10-19 cartons, \$33.05 each; 20-49 cartons, \$31.35 each; and 50+ cartons, \$30.95 each.

³ The cost of the toner bottle was calculated based on BLI's tested toner yield of 8,997 pages when using the BLI Test Original (with 6% page coverage, see "Maintenance"), and an estimated retail price of \$28.17 per 230g toner cartridge.

⁴ Life-cycle cost for each monthly volume is calculated by multiplying the total cost per page by the monthly volume by 60 months (five years).

* Includes depreciated purchase price, supplies and paper. As of February 2001, BLI does not include service cost in the cost analysis because of variations in pricing from provider to provider, coverage provided by various contracts, and policies of various manufacturers/vendors regarding whether or not they publish suggested pricing for their contracts. Buyers who intend to purchase a service contract should factor that cost in based on the actual pricing offered by their vendor. Please keep this in mind when comparing cost-per-page information with that of other models tested.

ENVIRONMENTAL SPECIFICATIONS

Electrical system: 120 V, 60 Hz, 7 amps. The unit tested had a three-wire cord (grounded), 9' and 8-1/2" in length, and carried UL approval for the United States and Canada.

Noise: Scale A, 63 db (single-point reading; running noise). Range for ADF-equipped models tested to date by BLI, 52 to 75 db.

Paper fault: None. (Georgia-Pacific Spectrum Xerographic Bond and Georgia-Pacific GeoCycle recycled paper containing 20% post-consumer fiber were used in this test unit.)

PHYSICAL SPECIFICATIONS

DIMENSIONS AND WEIGHTS				
Unit/Accessories	Height	Width	Depth	Weight
Gestetner 1302f	14.6"	18.4"	17.7"	49 lbs.
ADF	3.8"	4.3"	14.2"	4.4 lbs.
Paper Tray Unit	5.6"	17.0"	16.3"	13.3 lbs.
Cabinet	21"	16.8"	15.5"	

(This report has been reprinted with the written permission of Buyers Laboratory Inc.)

10/02

Copyright 2002. **WARNING:** This material is copyrighted by Buyers Laboratory Inc. and is the sole property of Buyers Laboratory. Duplication of this proprietary report or excerpts from this report, in any manner, whether printed or electronic (including, but not limited to, copying, faxing, scanning or use on a fax-back system), is illegal and strictly forbidden without written permission from Buyers Laboratory. Violators will be prosecuted to the fullest extent of the law. To purchase reprints of any BLI reports or articles, contact BLI at (201) 488-0404. Buyers Laboratory Inc., 20 Railroad Avenue, Hackensack, NJ 07601. Or visit our Web site at www.buyerslab.com.

BACKGROUND INFO

Dataquest Segment 1
 SRP (USA; Canada): \$1,895/\$2,595; Info not avail
 Manufacturing Status: New
 Domestic Intro Date: November 2001
 OEM: Ricoh (China)
 Also Sold As: Lanier 5613/5613F; Ricoh Aficio 1013/1013f;
 Savin 2513/2513f
 Distribution: Dealers
 Mfr's Rec Mo Vol: Up to 5,000 copies



TYPE

Monochrome copier, MF
 Configuration/Scanner: Desktop, digital
 Toner: Dry, dual component

GENERAL SPECIFICATIONS/PAPER HANDLING

First-Copy Time: 8 sec
 Multicopy (Ltr/Lgl/Ldgr): 13 cpm/Info not avail/Not applicable
 Warm-Up Time: 20 sec
 Std Paper Source(s): Single drawer
 Std Paper Capacity: 250 sheets
 Paper Weights: 16 to 24 lbs
 Bypass/Paper Weights: 100-sheet/16 to 42 lbs
 Max Paper Sources/Capacity: 3/850 sheets
 Max Original Size: 8-1/2 x 14
 Min/Max Output Size: 5-1/2 x 8-1/2/8-1/2 x 14
 Scan/Copy Resolution: 600 x 600 dpi/600 x 600 dpi
 Std/Max Copier Memory: 8 MB/40 MB
 Duplex: None
 Capacity/Paper Sizes: Not applicable
 Document Feeder: Opt ADF/Std ADF
 Speed/Capacity: 13 opm/30 orig
 Paper Weights: 14 to 28 lbs
 Sorter (Bins/Capacity): None
 Stapler Sorter: None
 Bins/Stapling Capacity: Not applicable
 Stapling Positions: Not applicable
 Finisher: None
 Tray/Stapling/Position(s): Not applicable
 Other: Electronic sorting (w/32-MB option);
 optional paper bank (adds one 500-sheet
 drawer)

CONTROL PANEL

Keypad
 Quantity Selector: 1 to 99 (0 to 9 keypad)
 Message Display: Yes
 Help Key: No

OPTIONS

ADF: \$325
 500-sheet paper bank: \$340
 Cabinet: \$207
 32-MB copier memory: \$185

MAINTENANCE

Fuser Rollers: Two
 Yield: Info not avail
 Cleaning Blades: Info not avail
 Yield: Info not avail
 Other: Info not avail
 Yield: Info not avail
 Fuser Oil: Not required
 PM Schedule: 45,000

SUPPLIES

Photoconductor: Organic drum unit
 Yield: 45,000
 Price: Priced by dealer
 Toner: 230g btl
 Yield: 7,000
 % Coverage: 6%
 Price: Priced by dealer
 Developer: Incl in drum unit
 Yield: 45,000
 Price: Incl in drum unit

COPIER FEATURES

Automatic Features: AES, AS, ASO
 Book Copy: No
 Booklet Mode: No
 Color: No
 Copy Control: 10
 Covers: No
 Editing: No
 Energy-Save: Yes
 Erase: No
 Image Insert: No
 Image Overlay: No
 Image Repeat: No
 Image Rotate: No
 Interrupt: No
 Job Build: No
 Job Programs: No
 Other Features:
 Scan once, print many; user tools
 Job Time: No
 Language: No
 Margin Shift: No
 Neg/Pos: No
 OHP Interleaving: No
 Photo Mode: Yes
 Poster Mode: No
 Preset R/E: 3R,2E
 Program Ahead: No
 Sheet Insertion: No
 Stamping: No
 Timer: No
 2-in-1: Std
 XY Zoom: No
 Zoom Range: 50 to 200 (1%)

ADDITIONAL INFORMATION

Dimensions (H x W x D): 14.6" x 18.4" x 17.7"
 Weight: 44/49 lbs
 Power Requirements: 120 V, 15 A
 Dedicated Outlet: Not required
 Energy Star-Compliant: Yes
 Operating Noise Level: Info not avail

COMMENTS

The 1302F features std copying and fax with optional network print functionality

Info not avail = Info not provided by MFR. Specs were obtained from manufacturer/distributor and not confirmed by BLI testing.
 (FAD IMAGE #12456)

Copyright 2002. **WARNING:** This material is copyrighted by Buyers Laboratory Inc. and is the sole property of Buyers Laboratory. Duplication of this proprietary report or excerpts from this report, in any manner, whether printed or electronic (including, but not limited to, copying, faxing, scanning or use on a fax-back system), is illegal and strictly forbidden without written permission from Buyers Laboratory. Violators will be prosecuted to the fullest extent of the law. To purchase reprints of any BLI reports or articles, contact BLI at (201) 488-0404. Buyers Laboratory Inc., 20 Railroad Avenue, Hackensack, NJ 07601. Or visit our Web site at www.buyerslab.com.

MULTIFUNCTION MODES

<i>Copier:</i>	Std	<i>Fax:</i>	No/Std
<i>Internet Fax:</i>	No	<i>Network Fax:</i>	No
<i>Network Printer:</i>	Opt	<i>PC Fax:</i>	No
<i>Printer:</i>	Opt	<i>Scanner:</i>	No

CONNECTIVITY SPECIFICATIONS

<i>Operating System Support:</i>	Mac 8.x, 9.x, Win 9.x, NT 4.0, 2000*
<i>Parallel Interface:</i>	Opt
<i>PC Fax/Print/Scan:</i>	No/Yes/No
<i>Serial Interface:</i>	None
<i>PC Fax/Print/Scan:</i>	Not applicable
<i>USB Interface:</i>	None
<i>PC Fax/Print/Scan:</i>	Not applicable
<i>Network Interface:</i>	Opt Ethernet
<i>Interface Type:</i>	10/100BaseT
<i>LAN Fax/Print/Scan:</i>	No/Yes/No
<i>Networks Supported:</i>	
<i>NetWare:</i>	Yes
<i>Windows NT:</i>	Yes
<i>AppleTalk:</i>	Yes
<i>UNIX:</i>	Yes
<i>AS/400:</i>	Yes
<i>Other:</i>	None

FACSIMILE SPECIFICATIONS

<i>Scanner Technology:</i>	CCD		
<i>Compression Method:</i>	MH/MR/MMR		
<i>Modem Speed:</i>	33.6 Kbps		
<i>Max TX Resolution:</i>	200 x 400 lpi		
<i>Gray Scale/Halftones:</i>	64 levels		
<i>Std/Max Fax Memory:</i>	Shared		
<i>Min/Max Orig Size (W x L):</i>	5-1/2 x 8-1/2/8-1/2 x 14		
<i>Max Paper/Print Width:</i>	Info not avail		
<i>Effective Scanning Width:</i>	Info not avail		
<i>Correct-Order Output:</i>	Info not avail		
<i>Batch Files:</i>	Yes	<i>Polling:</i>	INA
<i>Battery Backup:</i>	12 hours	<i>Relay Request:</i>	INA
<i>Confid TX/RX:</i>	No/No	<i>Smoothing:</i>	Yes
<i>Dual Lines:</i>	Yes	<i>Timers:</i>	No
<i>Multi Access:</i>	No	<i>Transfer Hub:</i>	No

Dialing Capabilities

<i>Broadcasting (Groups/Dest):</i>	5/100		
<i>Redial (Attempts/Intervals):</i>	Info not avail		
<i>One Touch:</i>	16	<i>Speed Dial:</i>	50
<i>Other:</i> Auto reduction; send later; direct fax number entry; label insertion; restricted access; telephone directory; forwarding; reception time printing			

CONNECTIVITY/MF OPTIONS

<i>Print controller Type 1013:</i>	\$450
<i>PostScript 2 kit Type 1018:</i>	\$360
<i>Network interface board Type 1018:</i>	\$485
<i>32-MB copier/printer memory:</i>	\$185
<i>64-MB printer memory:</i>	\$345
<i>128-MB printer memory:</i>	\$440
<i>Handset:</i>	\$65

INTERNET FAX SPECIFICATIONS

<i>TX/RX:</i>	Not applicable
<i>Fax-To-E-Mail:</i>	Not applicable

PC/NETWORK FAX SPECIFICATIONS

<i>Connection Type:</i>	Not applicable
<i>Type:</i>	Not applicable
<i>TX/RX:</i>	Not applicable

PRINTER SPECIFICATIONS

<i>Engine Mfr/Model:</i>	Ricoh/Aficio 1013
<i>Compatibility:</i>	IBM PC, Mac
<i>Speed:</i>	13 ppm
<i>Max Print Area:</i>	8-1/2 x 14
<i>Enhanced Resolution:</i>	1200 x 1200 dpi
<i>Unenhanced Resolution:</i>	600 x 600 dpi
<i>Std/Max Printer Memory:</i>	16 MB/144 MB
<i>Controller Mfr/Model:</i>	Destiny/Info not avail
<i>Processor/Bits/MHz:</i>	INA/INA/75
<i>PDL/PCL:</i>	PCL 5e/6, opt PostScript 2
<i>Controller Mfr/Model:</i>	Not applicable
<i>Processor/Bits/MHz:</i>	Not applicable
<i>PDL/PCL:</i>	Not applicable
<i>Controller Mfr/Model:</i>	Not applicable
<i>Processor/Bits/MHz:</i>	Not applicable
<i>PDL/PCL:</i>	Not applicable
<i>Other:</i> Slipsheet insertion; edge smoothing; watermarks; tray locking; SmartNet monitor utility	

SCANNER AND IMAGE MANAGEMENT SPECIFICATIONS

<i>Connection Type:</i>	Not applicable
<i>Technology/Speed:</i>	Not applicable
<i>Max Resolution:</i>	Not applicable
<i>TWAIN/ISIS Compatible:</i>	Not applicable
<i>Scan/Image Software:</i>	Not applicable
<i>OCR Software:</i>	Not applicable
<i>File Mgmt Software:</i>	Not applicable
<i>Scan-To-E-Mail:</i>	Not applicable
<i>Other:</i>	

COMMENTS

*Also Me and XP; 32-MB memory used to upgrade both copier and printer memory; fax memory shared with copier memory

Info not avail = Info not provided by MFR. Specs were obtained from manufacturer/distributor and not confirmed by BLI testing.
(FAD IMAGE #12456)

Copyright 2002. **WARNING:** This material is copyrighted by Buyers Laboratory Inc. and is the sole property of Buyers Laboratory. Duplication of this proprietary report or excerpts from this report, in any manner, whether printed or electronic (including, but not limited to, copying, faxing, scanning or use on a fax-back system), is illegal and strictly forbidden without written permission from Buyers Laboratory. Violators will be prosecuted to the fullest extent of the law. To purchase reprints of any BLI reports or articles, contact BLI at (201) 488-0404. Buyers Laboratory Inc., 20 Railroad Avenue, Hackensack, NJ 07601. Or visit our Web site at www.buyerslab.com.

